



**PATIENT
POSITIONING**
in the
OPERATING ROOM

KliniGel™

DEMARCA®
VIRGINIO

MEDICAL AND HEALTH CARE SUPPLIER

J | DEMARTA[®]
T | VIRGINIO
MEDICAL AND HEALTH CARE SUPPLIER

KliniGel[™]



IMPRESA STORICA D'ITALIA



DEMARTA VIRGINIO S.r.l. is a historic company founded in Turin in 1912 and specialized in producing and marketing orthopedic items and health equipment worldwide. We are particularly known for our Klinigel[™] line, which includes surgical polymer gel positioners used in operating rooms across Europe. With over a century of experience, we pride ourselves on maintaining high-quality standards and ensuring the satisfaction of our customers, while continuing to innovate and cement our reputation in the medical and healthcare industry.



A patient undergoing surgery is often made to stay in the same position for a prolonged time, which can last hours and present the risk of pressure injuries. These injuries can be prevented with correct positioning of the person, thus reducing the formation of ulcers, pressure sores and nerve injuries. Those who undergo an operation are also given general or local anaesthesia, which limits sensory perception and mobility, preventing the reaction to potentially harmful external stimuli, such as rubbing, pressure, bumps and burns. Hence the need for a line of devices suitable for positioning the patient, so that his weight and pressure are adequately distributed throughout the operation.

INTRODUCTION TO THE KLINIGEL LINE 05

GEL POSITIONING PADS

POSITIONING PADS FOR OPERATING TABLE	06
POSITIONING PADS FOR HEAD, NECK, AND FACE	09
POSITIONING PADS FOR UPPER LIMBS	15
POSITIONING PADS FOR LIMBS	18
POSITIONING PADS FOR TRUNK AND ABDOMEN	24

POSITIONS

LATERAL POSITION	32
SUPINE POSITION	34
PRONE POSITION	36
LITHOTOMY POSITION	38

BENEFITS

- Effective in preventing abrasions
- Effective in preventing rubbing burns
- Effectiveness in preventing pressure sores
- Ergonomically designed
- Reusable and easily sanitized
- Thanks to its density, it allows the patient's weight to be distributed evenly, eliminating pressure points
- Supports any weight without getting deformed
- Excellent memory even after repeated use

PROPERTIES

- Water-repellent
- Reusable, durable
- Easily sanitized
- Isothermal
- Latex free
- Non-toxic
- Radiolucent
- Antistatic
- Odourless
- Non-conductive
- Amorphous polyurethane gel with a density of 0.99 g/cm³
- Antibacterial
- Breathable and waterproof Platilon® outer polyurethane film
- Heat-resistant
- Abrasion-resistant
- Self-sealing memory gel, no material spillage when cutting the outer film
- They do not absorb liquids or odours
- They do not decompose
- Non-flammable, self-extinguishing
- Can be used with thermal blankets

POSITIONS

- LA** LATERAL POSITION
- SU** SUPINE POSITION
- PR** PRONE POSITION
- LI** LITHOTOMY POSITION



SMOOTH GEL PADS



WATERPROOF



LATEX FREE



RADIOLUCENT



CODE	Dimensions (cm)	CODE	Dimensions (cm)
05.00.AP301	23 x 50 x 1	05.00.AP405-1.5	15 x 35 x 1.5
05.00.AP302	99 x 50 x 1	05.00.AP406	70 x 50 x 1
05.00.AP303	50 x 50 x 1	05.00.AP406-1.5	70 x 50 x 1.5
05.00.AP303-1.5	50 x 50 x 1.5	05.00.AP407	70 x 45 x 1
05.00.AP304	50 x 25 x 1	05.00.AP407-1.5	70 x 45 x 1.5
05.00.AP305-1.5	50 x 25 x 1.5	05.00.AP408	15 x 50 x 1
05.00.AP305	10 x 38 x 1	05.00.AP408-1.5	15 x 50 x 1.5
05.00.AP306	42 x 15 x 1	05.00.AP412	46 x 33 x 0.5
05.00.AP307	10 x 61 x 1	05.00.AP412-1	46 x 33 x 1
05.00.AP308	45 x 50 x 1	05.00.AP413	22 x 17 x 1
05.00.AP308-1.5	45 x 50 x 1.5	05.00.AP414	60 x 60 x 2.5
05.00.AP401	193 x 86 x 1	05.00.AP415	90 x 50 x 2.5
05.00.AP402	183 x 50 x 1	05.00.AP416	70 x 25 x 2
05.00.AP402-1.5	183 x 50 x 1.5	05.00.AP417	10 x 15 x 2
05.00.AP403	117 x 50 x 1	05.00.AP418	6 x 8 x 0.6
05.00.AP403-1.5	117 x 50 x 1.5	05.00.AP423	70 x 50 x 1.6
05.00.AP404	160 x 43 x 1	05.00.AP424	100 x 50 x 1.5
05.00.AP405	15 x 35 x 1	05.00.AP555	66 x 15 x 1.3



They distribute the weight evenly and provide protection to bony prominences from pressure across the entire area of the operating table.

PERINEAL RECESS PADS



WATERPROOF



LATEX FREE



RADIOLUCENT



COE	Dimensions (cm)
05.00.AP409WC	117 x 50 x 1
05.00.AP409WC15	117 x 50 x 1.5
05.00.AP410WC	100 x 50 x 1
05.00.AP410WC15	100 x 50 x 1.5
05.00.411WC	50 x 50 x 1
05.00.AP411WC15	50 x 50 x 1.5



These sheets are ideal for use on operating tables during lithotomy and cystoscopy procedures. This set is suitable for various surgical procedures, particularly in urological and gynecological surgery.



EMBOSSED GEL PADS

CODE	Dimensions (cm)
05.00.AP061	50 x 50 x 1.6
05.00.AP062	115 x 50 x 1.6
05.00.AP063	40 x 23 x 1.6
05.00.AP064	91 x 45 x 1.6

These sheets feature an embossed design that provides relief and comfort, allowing for skin oxygenation. Suitable for all positions.



WATERPROOF



LATEX FREE

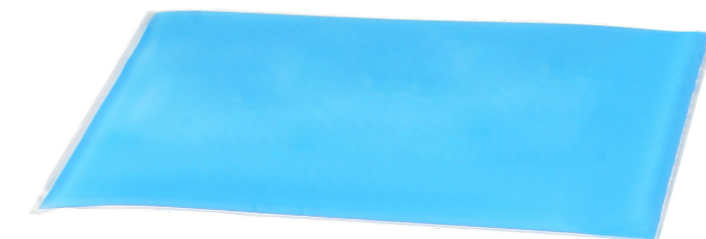


RADIOLUCENT

INCUBATOR GEL PADS

CODE	Dimensions (cm)
05.00.AP053	30.5 x 66 x 1.27

This product is designed for neonatal and pediatric patients. It provides support and relief from pressure. Suitable for all positions.



WATERPROOF



LATEX FREE



RADIOLUCENT



EZ FEEL SHEETS – ANTI-DECUBITUS CUSHIONS



WATERPROOF



LATEX FREE



RADIOLUCENT

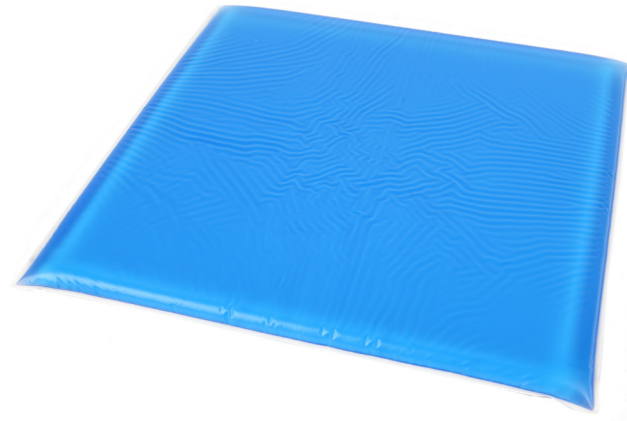
CODE	Dimensions (cm)
05.00.NC1616	40 x 40 x 1.6
05.00.NC1616-3	40 x 40 x 3
05.00.NC1816	46 x 40 x 1.6
05.00.NC1816-3	46 x 40 x 3
05.00.NC1818	46 x 46 x 1.6
05.00.NC2018	50 x 46 x 1.6
05.00.NC2020	50 x 50 x 1.6

LA LI PR SU

Indicated for **pediatric surgeries** or in conjunction with the **perineal cushion** as support for lithotomy procedures.

BEACH CHAIR

EZ FEEL sheets are pressure relief cushions used in shoulder surgery procedures in the semi-sitting/beach chair position; the legs and knees must be relaxed and not under strain. By gradually elevating the upper and lower parts and alternating them, shear and friction forces are reduced.



COMFY GEL PADS - ANTI-DECUBITUS CUSHIONS



WATERPROOF



LATEX FREE



RADIOLUCENT

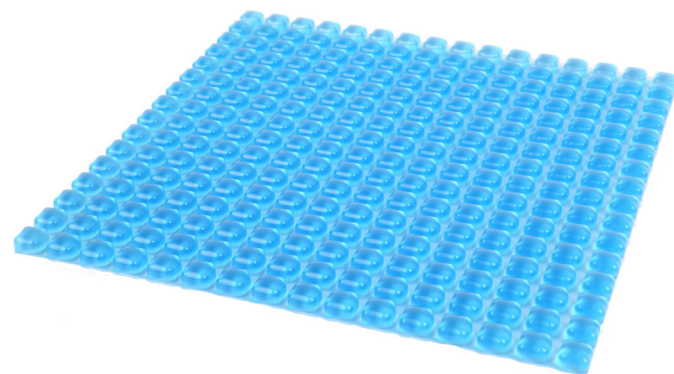
CODE	Dimensions (cm)
05.00.NP1616	40 x 40 x 1.6
05.00.NP1816	46 x 40 x 1.6
05.00.NP18108	6 x 46 x 1.6
05.00.NP2018	50 x 46 x 1.6

LA LI PR SU

These embossed pressure relief cushions help maintain oxygenation of the sacral area skin, thus preventing the risk of redness.

BEACH CHAIR

COMFY sheets are pressure relief cushions used in shoulder surgery procedures in the semi-sitting/beach chair position; the legs and knees must be relaxed and not under strain. By gradually raising the upper and lower parts and alternating them, shear and friction forces are reduced.



CLOSED LOOP HEADREST

WATERPROOF

LATEX FREE

RADIOLUCENT

CODE	Dimensions (cm)
05.00.AP001	9 x 4 x 2 (Pediatric)
05.00.AP002	14 x 6 x 3.5 (Pediatric)
05.00.AP003	20 x 7.5 x 4.5 (Adult)
05.00.AP004	20 x 7.5 x 7.5 (Adult)

Donut-shaped cushions. They protect the head, face, neck, and ears during various types of surgical procedures, while providing comfort to the patient. The first two models are designed for pediatric patients, while the latter are intended for adult patients.

LI SU



HORSESHOE HEADREST

WATERPROOF

LATEX FREE

RADIOLUCENT

CODE	Dimensions (cm)
05.00.AP011-C	9 x 4 x 2
05.00.AP012-C	14 x 6 x 3.5
05.00.AP013-C	20 x 7.5 x 4.5
05.00.AP014-C	20 x 7.5 x 7.5

Thanks to their opening, they allow greater positioning flexibility and provide easy access for ventilation tubes. By positioning the head laterally on these cushions, the pressure on the cheekbones is relieved, leaving the oropharyngeal cavity unobstructed.

LA



HORSESHOE HEADREST WITH BASE

WATERPROOF

LATEX FREE

RADIOLUCENT

CODE	Dimensions (cm)
05.00.AP011	9 x 4 x 2
05.00.AP012	14 x 6 x 3.5
05.00.AP013	20 x 7.5 x 4.5
05.00.AP014	20 x 7.5 x 7.5

Donut-shaped cushions with a closed bottom. Designed to support the patient's head and face during surgical procedures, providing easy access for intubation.

LA



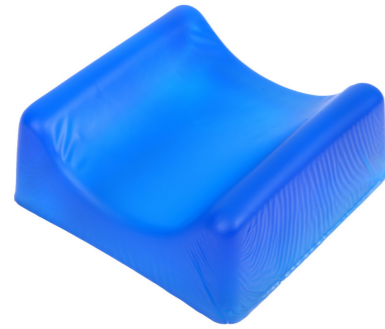


STABILIZING HEADREST

WATERPROOF

LATEX FREE

RADIOLUCENT



CODE	Dimensions (cm)
05.00.AP081	19 x 19 x 6

LI SU

This cushion is designed for procedures performed in the supine position that require optimal stability of the patient's head. The gel material provides even weight distribution.

TWO WAY PRONE HEADREST

WATERPROOF

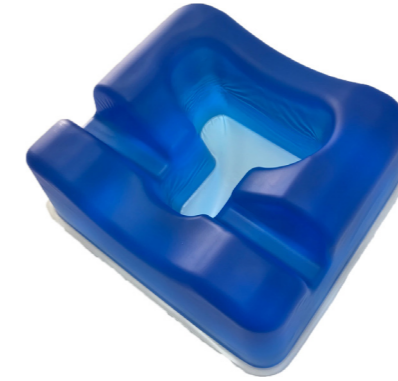
LATEX FREE

RADIOLUCENT

CODE	Dimensions (cm)
05.00.AP024	24 x 22 x 9

Designed to support the patient's head during surgery, this unique design provides excellent comfort, stability, and protection when the patient's head is in the prone position. The two lateral openings allow easy access for intubation.

PR



HEART-SHAPED HEADREST / OPHTHALMIC

WATERPROOF

LATEX FREE

RADIOLUCENT



CODE	Dimensions (cm)
05.00.AP113	30 x 31.5 x 7 / 3.3

LI SU

It protects and supports the head, neck, and face during all types of surgical procedures.

TWO WAY PRONE HEADREST

WATERPROOF

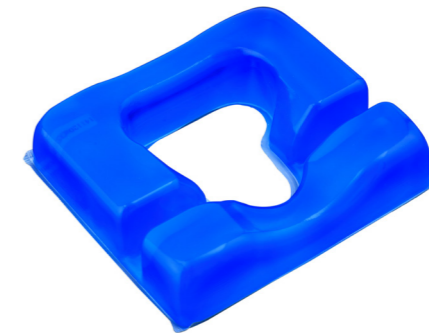
LATEX FREE

RADIOLUCENT

CODE	Dimensions (cm)
05.00.AP025	25 x 23 x 7

Thanks to its unique ergonomic design, it supports and stabilizes the head and neck during all types of surgical procedures, with easy access for intubation.

PR

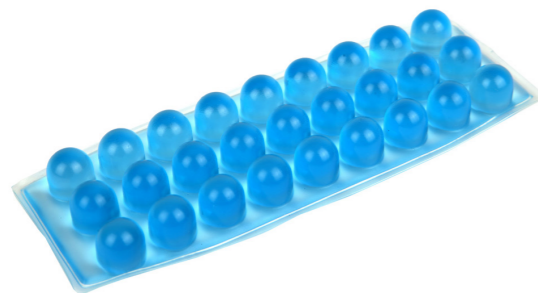


BUBBLE FACE RESTS

WATERPROOF

LATEX FREE

RADIOLUCENT



CODE	Dimensions (cm)
05.00.AP021	16 x 6 x 1.6

LI SU

This versatile cushion can be used in various procedures involving endotracheal tubes and corrugated tubes from ventilation circuits, preventing direct contact with the patient's skin.

FOUR WAY PRONE HEADREST

WATERPROOF

LATEX FREE

RADIOLUCENT

CODE	Dimensions (cm)
05.00.AP025-D	25 x 23 x 14

Thanks to its unique ergonomic design, it supports and stabilizes the head and neck during all types of surgical procedures, with easy access for intubation.

PR





CONTOURED OPHTHALMIC HEADREST THORNTON-STYLE

WATERPROOF

LATEX FREE

RADIOLUCENT



CODE	Dimensions (cm)
05.00.AP110	27 x 23 x 7

LI SU

This Thornton-style shaped ophthalmic headrest provides optimal protection and support for the head and neck during all types of ophthalmic surgeries. Thanks to its advanced construction, it ensures even weight distribution, optimizing the surgical working conditions.

HEADREST WITH CENTRAL RECESS

WATERPROOF

LATEX FREE

RADIOLUCENT



CODE	Dimensions (cm)
05.00.FC625P	25 x 25 x 6
05.00.FC625G	30 x 30 x 6

LI SU

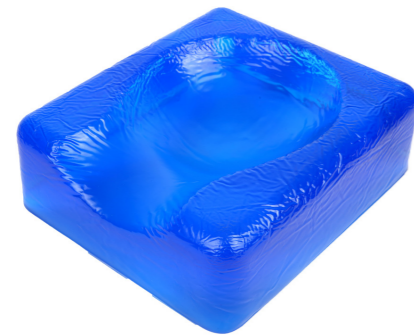
It protects and supports the head, neck, and face during all types of surgical procedures.

ANATOMICAL SUPINE HEADREST

WATERPROOF

LATEX FREE

RADIOLUCENT



CODE	Dimensions (cm)
05.00.AP112	27 x 23 x 9

LI SU

Designed for the patient in the supine position, it relieves pressure on the ears, neck, and the back of the head. It provides greater stability to the head due to its shape.

POSITIONER FOR THYROID GLAND, HEAD AND NECK

CODE	Dimensions (cm)
05.00.AP104-2	51 x 40 x 14

SU

This cushion protects and supports the neck during surgical procedures, particularly in thyroid surgeries. It maintains the neck's hyperextension, facilitating surgical maneuvers.



WATERPROOF

LATEX FREE

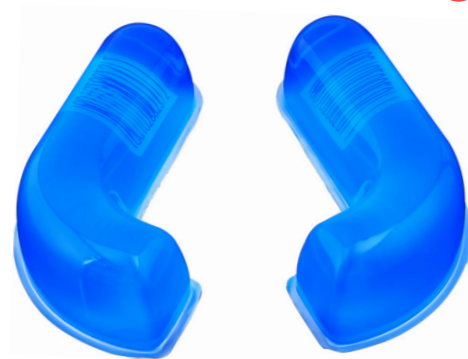
RADIOLUCENT

ADJUSTABLE TWO-PIECE PRONE HEADREST

WATERPROOF

LATEX FREE

RADIOLUCENT



CODE	Dimensions (cm)
05.00.AP810	8 x 23 x 5 (Dimensions for 1 piece)

LA PR

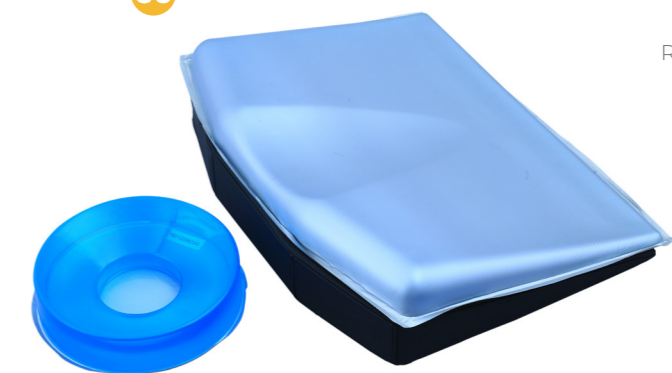
This headrest is equipped with two pieces that allow for adjusting and adapting the patient's support as needed. It supports and stabilizes the head and neck during all types of surgical procedures.

POSITIONING SYSTEM FOR THYROID GLAND, HEAD AND NECK

CODE	Dimensions (cm)
05.00.AP104-1	44 x 30 x 12

SU

This cushion protects and supports the neck during surgical procedures. It maintains the neck's hyperextension during thyroid and neck surgeries, thanks to the use of a closed-ring headrest.



WATERPROOF

LATEX FREE

RADIOLUCENT



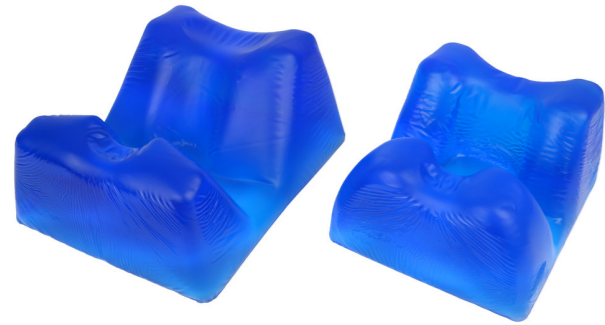
PRONE HEADREST

- WATERPROOF
- LATEX FREE
- RADIOLUCENT

CODE	Dimensions (cm)
05.00.AP022	28 x 23 x 14.5
05.00.AP023	23 x 19 x 13

PR

Designed to support the patient's head during surgical procedures. The unique design provides excellent comfort, stability, and protection when the patient's head is in the prone position. The two sizes allow for adjustment of the neck posture.



The increased height of the gel support, along with the two lateral openings, allows for EASY ACCESS DURING INTUBATION.

SHAPED POSITIONER WITH BASE FOR ULNAR NERVE

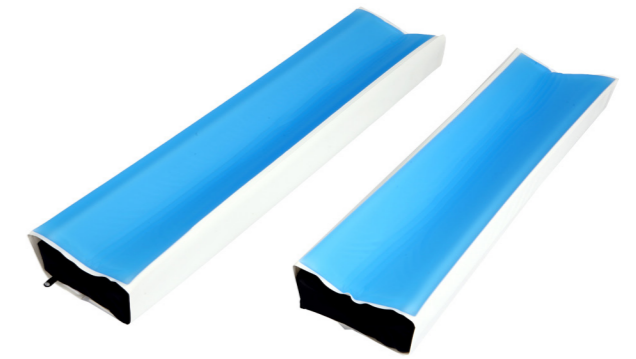
CODE	Dimensions (cm)
05.00.AP073	40 x 12.5 x 6
05.00.AP074	60 x 12.5 x 6
05.00.AP075	50 x 12.5 x 6
05.00.AP076	63 x 12.5 x 6

LA LI PR SU

The foam is contoured to provide stability to the arm during various procedures. This product can be used for both the arm and the leg. Positioners consist of an internal polyurethane layer and a gel-coated base.

- WATERPROOF
- LATEX FREE
- RADIOLUCENT

The ulnar/brachial nerve protectors are essential for SAFEGUARDING THE SENSITIVE AREAS of the elbows and arms.



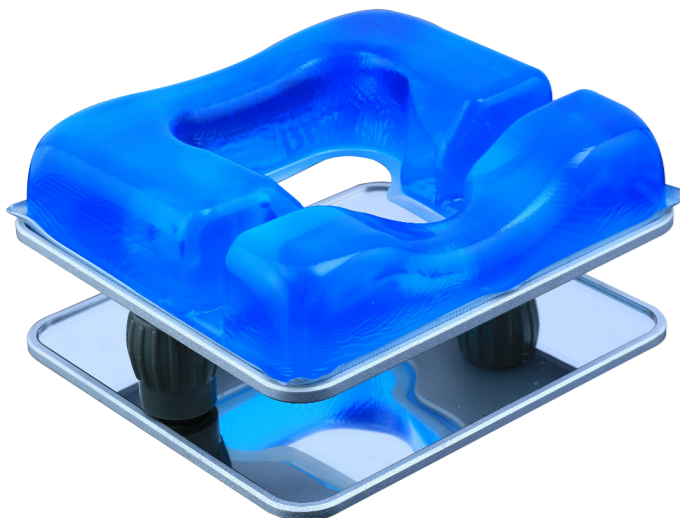
PRONE HEADREST WITH MIRROR

- WATERPROOF
- LATEX FREE
- RADIOLUCENT

CODE	Dimensions (cm)
05.00.AP025-S	25 x 23 x 8.5/11

PR

Thanks to its unique ergonomic design, it supports and stabilizes the head and neck during all types of surgical procedures, providing easy access for intubation.



This type of headrest, equipped with a mirror, ALLOWS DIRECT VISUALIZATION OF THE FACE, eyes, and the position of the endotracheal tube. This also facilitates head mobilization.

CODE	Dimensions (cm)
05.00.AP071	40 x 12.5 x 2
05.00.AP072	60 x 12.5 x 2

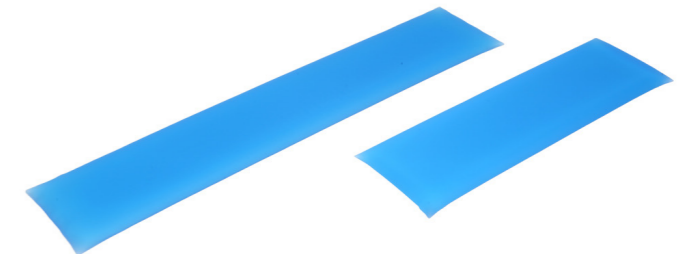
LA LI PR SU

This positioner, placed on the armrest accessory, is used to protect the brachial plexus as well as the ulnar, radial, and median nerves.

ARM POSITIONER

- WATERPROOF
- LATEX FREE
- RADIOLUCENT

Positioner designed to PREVENT PRESSURE ULCERS ON THE ARM caused by prolonged contact with the arm rest.





ULNAR NERVE STRAP



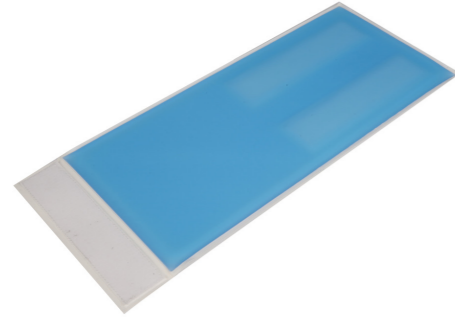
WATERPROOF



LATEX FREE



RADIOLUCENT



LA

CODE	Dimensions (cm)
05.00.AP311	46 x 21 x 0.8

Designed with adjustable Velcro, this arm protection provides stable comfort and relief from pressure, preventing compression on the ulnar nerve and thus avoiding paresthesia.

WRIST-HAND POSITIONER

CODE	Dimensions (cm)
05.00.AP005	28 x 8.3 x 6

Wedge-shaped, it elevates and provides stability and protection for the hand and wrist.

LA LI PR SU



WATERPROOF

LATEX FREE

RADIOLUCENT



RHOMBOUS STRAP FOR ULNAR NERVE



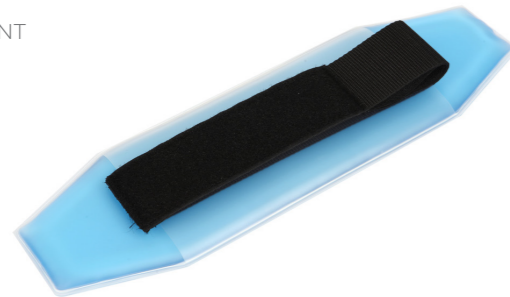
WATERPROOF



LATEX FREE



RADIOLUCENT



LA

CODE	Dimensions (cm)
05.00.AP310	38 x 12 x 8

Designed with adjustable Velcro, this arm protector provides comfort and stable pressure relief, preventing compression on the ulnar nerve and thus avoiding paresthesia.

CONTOURED GEL POSITIONER

CODE	Dimensions (cm)
05.00.AP077	52 x 15 x 5.5

The contoured shape offers comfort and stability during surgical procedures. This product can be used for arms, legs, and also the knee in both prone and supine positions.

LA LI PR SU



WATERPROOF

LATEX FREE

RADIOLUCENT



POSITIONER WITH EXPANDED BASE FOR ARM



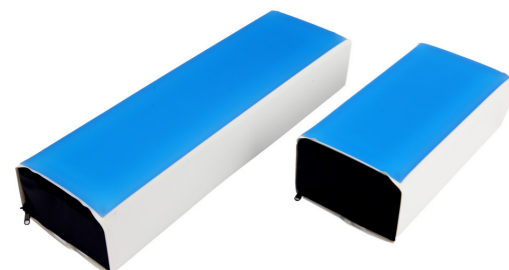
WATERPROOF



LATEX FREE



RADIOLUCENT



LA PR SU

CODE	Dimensions (cm)
05.00.AP419	70 x 20 x 8
05.00.AP420	30 x 15 x 10
05.00.AP421	50 x 15 x 10
05.00.AP422	60 x 15 x 10

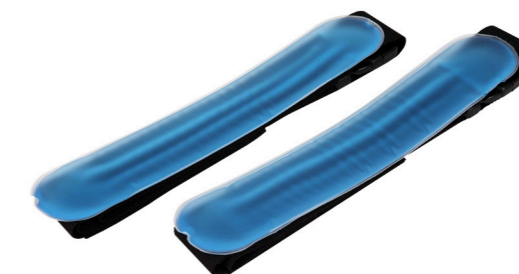
With a non-contoured lightweight polyurethane foam base, this cushion is suitable for use in various positions.

LOCKING STRAPS

CODE	Dimensions (cm)
05.00.FB01	33 x 7 x 1.5
05.00.FB02	36 x 7 x 1.5

The soft and comfortable polyurethane gel of these straps provides effective protection for the wrists and ankles, promoting the immobilization of the involved limbs. Designed with adjustable Velcro.

LA LI PR SU



WATERPROOF

LATEX FREE

RADIOLUCENT





HEEL CUSHION WITH STRAPS

WATERPROOF

LATEX FREE

RADIOLUCENT



CODE	Dimensions (cm)
05.00.AP033	17 x 18 x 1.3

LA SU

With a unique design, these heel cushions **provide support and pressure relief, ensuring maximum comfort** for the patient.

HEEL SUPPORT

WATERPROOF

LATEX FREE

RADIOLUCENT



PR SU



CODE	Dimensions (cm)
05.00.AP031	20 x 11 x 7 (Adulto)
05.00.AP8125D	9.7 x 5.3 x 3.5 (Pediatrico)
05.00.AP8125E	7.8 x 4.3 x 2.8 (Neonatale)

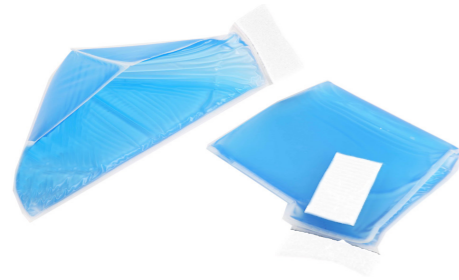
These cushions **allow for total relief of the heel during surgical procedures.** They provide maximum comfort and support for the heels during various surgical operations.

PAIR OF HEEL CUSHION WITH STRAPS

WATERPROOF

LATEX FREE

RADIOLUCENT



CODE	Dimensions (cm)
05.00.AP034	17 x 23 x 1.3

LA SU

Designed with **adjustable Velcro and a unique design**, these heel cushions **provide support and pressure relief across the entire malleolar area.** The increased height of the gel, compared to the laced heel supports, allows for better wrapping around the ankles.

PAIR OF HEART-SHAPED HEEL CUSHIONS WITH RECESS

WATERPROOF

LATEX FREE

RADIOLUCENT

SU



CODE	Dimensions (cm)
05.00.AP8125B	12 x 9.5

Dedicated to the heels, it is placed by the patient in the supine position.

PAIR OF HEEL CUPS

WATERPROOF

LATEX FREE

RADIOLUCENT



CODE	Dimensions (cm)
05.00.AP032	17 x 11 x 5

SU

These cushions provide **stability and support for the heels** during various surgical procedures.

PAIR OF HEART-SHAPED HEEL CUSHIONS

WATERPROOF

LATEX FREE

RADIOLUCENT

SU



CODE	Dimensions(cm)
05.00.AP8125A	25 x 25 x 6

Designed for the heels, it is placed by the patient in the supine position.



DOME POSITIONER



WATERPROOF



LATEX FREE



RADIOLOGENT



CODE	Dimensions (cm)
05.00.AP051	35 x 15 x 7.5

PR SU

This semi-cylindrical positioner protects the feet, shoulders, chest, and ankles. It is also an excellent aid when placed under the patient's knees while in the supine position or under the soles of the feet when in the prone position.

LITHOTOMY PIN PROTECTIONS

WATERPROOF

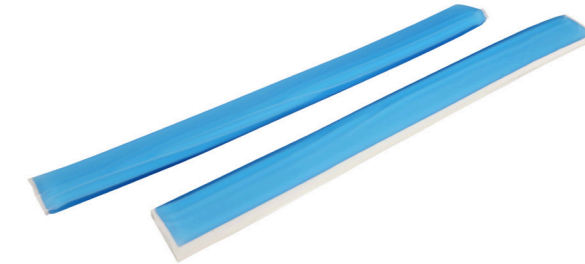
LATEX FREE

RADIOLOGENT

CODE	Dimensions (cm)
05.00.AP903	71 x 12 x 0.8

LI

These cushions are used when the patient is in the lithotomy position and help prevent skin damage.



SHAPED POSITIONER WITH BASE



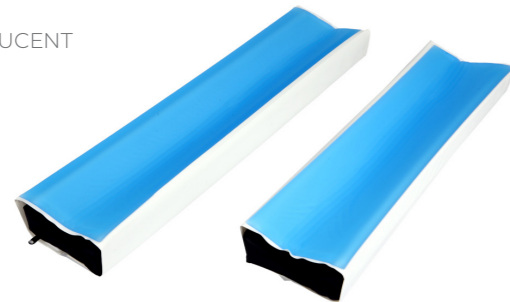
WATERPROOF



LATEX FREE



RADIOLOGENT



CODE	Dimensions (cm)
05.00.AP073	40 x 12.5 x 6
05.00.AP074	60 x 12.5 x 6
05.00.AP075	50 x 12.5 x 6
05.00.AP076	63 x 12.5 x 6

LA PR SU

The foam is shaped to provide stability to the lower limbs during various surgical procedures.

ANKLE PROTECTION STRAPS

WATERPROOF

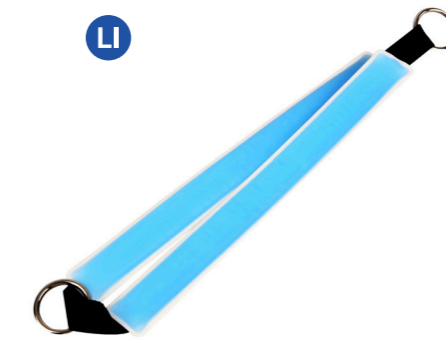
LATEX FREE

RADIOLOGENT

CODE	Dimensions (cm)
05.00.AP904	31 x 4 x 1
05.00.AP905	44 x 4.5 x 1

LI

Shaped like a stirrup, these straps are designed to prevent damage to patients during long lithotomy procedures. Easy to attach to the corresponding support.



POSITIONER BASE FOR LEGS WITH FOAM



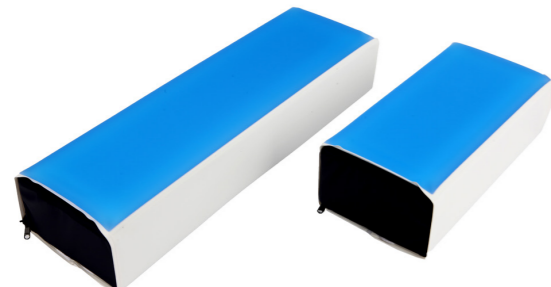
WATERPROOF



LATEX FREE



RADIOLOGENT



CODE	Dimensions (cm)
05.00.AP073	40 x 12.5 x 6
05.00.AP074	60 x 12.5 x 6
05.00.AP075	50 x 12.5 x 6
05.00.AP076	63 x 12.5 x 6

LA PR SU

With a lightweight polyurethane foam base, this cushion is suitable for use in various positions.

LLOYD'S STIRRUPS CUSHIONS

WATERPROOF

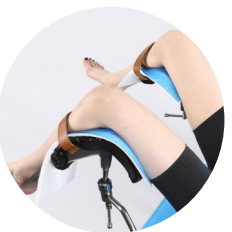
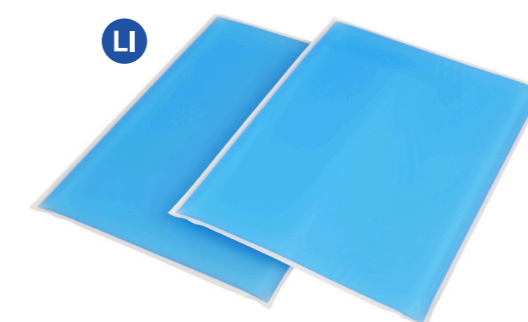
LATEX FREE

RADIOLOGENT

CODE	Dimensions (cm)
05.00.AP801	31 x 23 x 1
05.00.AP802	40 x 25 x 1
05.00.AP803	52 x 30 x 1
05.00.AP804	55 x 52 x 1

LI

The stirrup cushions are designed to fit both Lloyd devices and other types of supports. Suitable for gynecological and urological procedures.





ALLEN SUPPORT PROTECTIONS



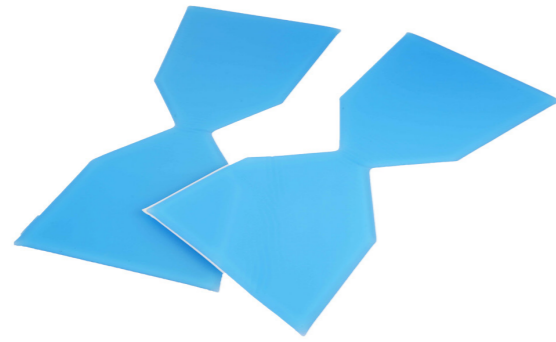
WATERPROOF



LATEX FREE



RADIOLUCENT



LI

The cushions on the stirrup provide excellent **protection to the calf and heel area during surgical procedures in the lithotomy position.** They are compatible with all Allen supports.

CODE	Dimensions (cm)
05.00.AP901	23 x 28 x 1.3

CONTOURED GEL POSITIONER



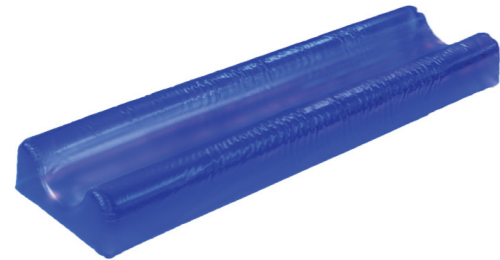
WATERPROOF



LATEX FREE



RADIOLUCENT



PR SU

The shaped design provides **comfort and stability during surgical procedures.** This product can be used for arms, legs, and also the knee in the prone position.

CODE	Dimensions (cm)
05.00.AP077	52 x 15 x 5.5

TRACTION BOOT PROTECTION



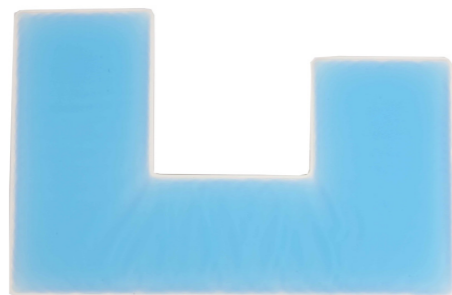
WATERPROOF



LATEX FREE



RADIOLUCENT



LI SU

This cushion is **designed to protect the patient's heel and foot from the traction boot.**

CODE	Dimensions (cm)
05.00.AP902	37 x 24 x 0.5

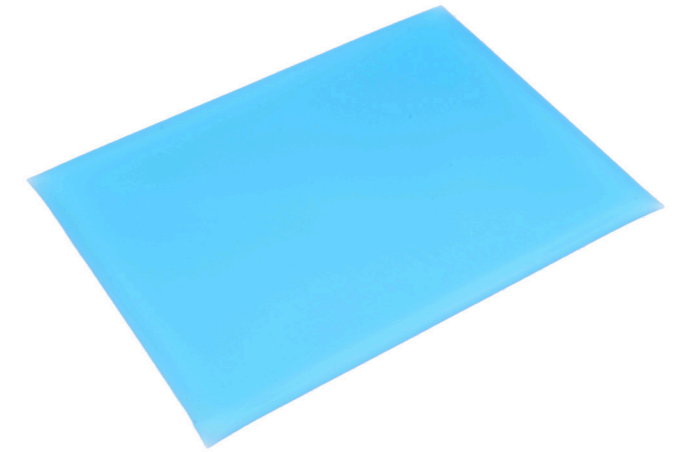
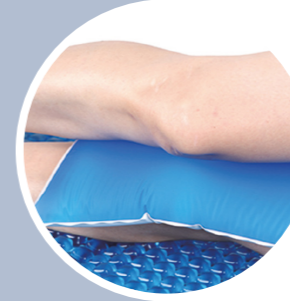
GRADUATED POSITIONER

CODE	Dimensions (cm)
05.00.AP052	23 x 36 x 3.8

This cushion provides **comfort and protection to prevent compression between the legs.**

LA

The graduated positioning device **PROVIDES NERVE PROTECTION AND MINIMIZES THE RISK OF SKIN ABRASIONS** during surgical procedures where the patient is positioned laterally.



WATERPROOF



LATEX FREE



RADIOLUCENT

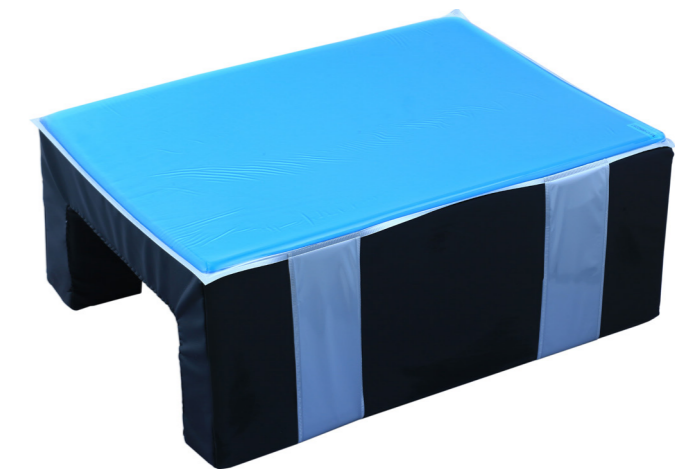
LOWER LIMB PROTECTION TUNNEL

CODE	Dimensions (cm)
05.00.AP103	65 x 41 x 23.5

Support with a coated foam base, featuring a cavity to **position the contralateral leg,** allowing for better exposure of the other leg during the procedure.

LA

The lateral platform is designed **FOR LOWER LIMB INJURIES.** Whether for the repair of small joint fractures, management of acetabular fractures, or open reduction and internal fixation during an ankle bone graft surgery, the lateral leg positioning device ensures reliability and stability during surgical procedures.



WATERPROOF



LATEX FREE



RADIOLUCENT



WILSON FRAME

WATERPROOF

LATEX FREE

RADIOLUCENT



PR

CODE	Dimensions (cm)
05.00.AP213	60 x 49 x 15.5

The Wilson frame is **designed for spinal surgery procedures**. It is made of high-density foam, engineered to provide the same support as metal frames without the bulk and high costs.

ABDOMINAL PROTECTION - ADULT

WATERPROOF

LATEX FREE

RADIOLUCENT

CODE	Dimensions (cm)
05.00.AP041	30 x 15 x 10
05.00.AP042	40 x 15 x 10
05.00.AP043	50 x 15 x 10
05.00.AP044	30 x 10 x 8.5
05.00.AP045	40 x 10 x 8.5
05.00.AP046	50 x 10 x 8.5
05.00.AP047	50 x 18 x 15

These cushions provide **pressure relief and prevent pressure ulcers** for patients.

PR

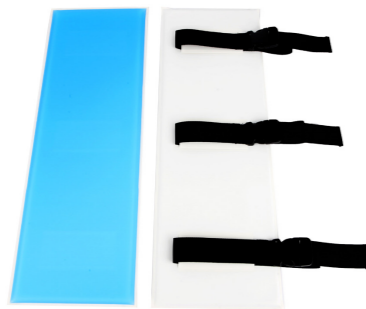


PAIR OF WILSON FRAME PADS

WATERPROOF

LATEX FREE

RADIOLUCENT



PR

CODE	Dimensions (cm)
05.00.AP210	75 x 25.5 x 2.5
05.00.AP211	75 x 25.5 x 1

Designed to cover the Wilson Frame, this padding set provides protection and pressure relief. Suitable for all Wilson frames.

UNIVERSAL OVAL POSITIONERS

WATERPROOF

LATEX FREE

RADIOLUCENT

CODE	Dimensions (cm)
05.00.AP091	16 x 8 x 4.5
05.00.AP092	33 x 7 x 5
05.00.AP093	33 x 12 x 6
05.00.AP094	36 x 12.5 x 7
05.00.AP095	25 x 12.5 x 5
05.00.AP096	38 x 12.5 x 6.3
05.00.AP097	50 x 12.5 x 7

Universal arm/leg positioners, suitable for various surgical procedures. The first two are pediatric.

LA LI PR SU



WILSON FRAME PAD SET

WATERPROOF

LATEX FREE

RADIOLUCENT



PR

CODE	Dimensions (cm)
05.00.AP212	Four Pieces
Lateral Plates x 2	72.5 x 17.5 x 2
Tapered Plate	18.5 x 12 x 2
Lateral Plate	18.5 x 12 x 2

The Wilson Gel Pad **fits perfectly onto the Wilson Frame Pad** and is secured to the frame with Velcro.

ABDOMINAL PROTECTION - PEDIATRIC

WATERPROOF

LATEX FREE

RADIOLUCENT

CODE	Dimensions (cm)
05.00.AP047-1	15 x 5 x 5
05.00.AP047-2	20 x 5 x 5
05.00.AP047-3	25 x 5 x 5
05.00.AP047-4	30 x 5 x 5
05.00.AP048-1	15 x 7.5 x 7.5
05.00.AP048-2	20 x 7.5 x 7.5
05.00.AP048-3	25 x 7.5 x 7.5
05.00.AP048-4	30 x 7.5 x 7.5

These pads have a flat base that provides **stability and pressure relief**.

PR





X-GEL ABDOMINAL PROTECTION



WATERPROOF



LATEX FREE



RADIOLUCENT



CODE	Dimensions (cm)
05.00.XG041	30 x 15 x 10
05.00.XG042	40 x 15 x 10
05.00.XG043	50 x 15 x 10

PR

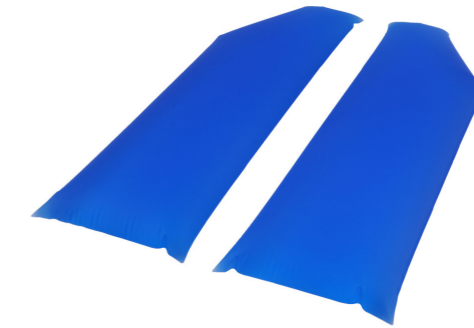
Its structure with a foam interior supports and stabilizes the patient's torso while in the prone position during all types of surgical procedures.

CHEST POSITIONER SET

CODE	Dimensions (cm)
05.00.AP050-1	71/58 x 20 x 7.6 (SX)
05.00.AP050-2	71/58 x 20 x 7.6 (DX)

These pads conform evenly to the area from the shoulder to the chest of the patient, thanks to their contoured design. They are suitable for positioning the upper body.

PR SU



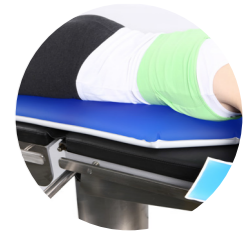
WATERPROOF



LATEX FREE



RADIOLUCENT



DOME POSITIONER



WATERPROOF



LATEX FREE



RADIOLUCENT



CODE	Dimensions (cm)
05.00.AP051	35 x 15 x 7.5

PR SU

This semi-cylindrical positioning device can prevent foot drop during surgical procedures when the patient is placed in the prone position.

X-GEL CHEST PROTECTION

CODE	Dimensions (cm)
05.00.CG049-1	30 x 16 x 13/9
05.00.CG049-2	40 x 16 x 13/9
05.00.CG049-3	50 x 16 x 13/9

It supports and stabilizes the patient's chest when in the prone position during all types of surgical procedures.

LA PR



WATERPROOF



LATEX FREE



RADIOLUCENT

CONTOURED CHEST PROTECTION



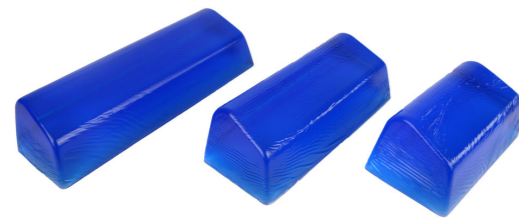
WATERPROOF



LATEX FREE



RADIOLUCENT



CODE	Dimensions (cm)
05.00.AP049-1	30 x 16 x 13/9
05.00.AP049-2	40 x 16 x 13/9
05.00.AP049-3	50 x 16 x 13/9

LA

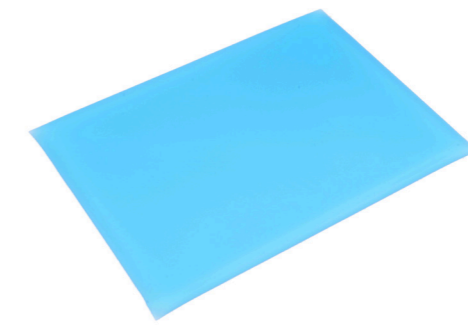
Designed with a profile, this thoracic cushion offers great utility and adaptability.

GRADUATED CHEST POSITIONER

CODE	Dimensions (cm)
05.00.AP052	23 x 36 x 3.8

These cushions have a flat base that provides stability and pressure relief.

PR SU



WATERPROOF



LATEX FREE



RADIOLUCENT



CHEST POSITIONER



WATERPROOF



LATEX FREE



RADIOLUCENT



CODE	Dimensions (cm)
05.00.AP6000	46 x 96 x 12

PR

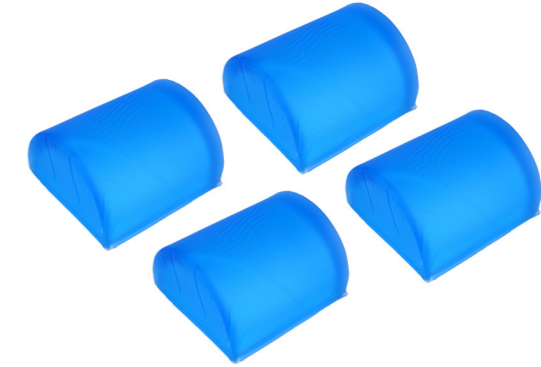
The thoracic positioner has a **closed-cell foam base with a viscoelastic foam support surface**. The outer cover features a **waterproof and breathable polyurethane lining**, with a non-slip base and a zipper on 3 sides.

RELTON FRAME POSITIONER SET

CODE	Dimensions (cm)
05.00.AP111	19 x 17.5 x 10.5

PR

These cushions are **designed for 4 contact areas of the Relton-Hall Frame**. This set helps reduce nerve damage and provides pressure protection on the iliac crests and in the pectoral region.



WATERPROOF

LATEX FREE

RADIOLUCENT

ADJUSTABLE CHEST POSITIONER



WATERPROOF



LATEX FREE



RADIOLUCENT



CODE	Dimensions (cm)
05.00.AP6001	46 X 70/90 X 12

PR

The adjustable thoracic positioner features a closed-cell foam **base with a viscoelastic foam support surface**. The outer cover is made of **waterproof and breathable polyurethane**, with a non-slip base and a zipper on 3 sides. The structure is equipped with two inserts that, when removed, adjust the length from 70 cm to 90 cm.

SACRAL PROTECTION

CODE	Dimensions (cm)
05.00.AP103-1	40 x 38 x 2.5

LI SU

This product helps prevent **pressure ulcers in the sacral area**. It is designed for use in all supine procedures for patients with an already exposed sacrum or those who are particularly sensitive.



WATERPROOF

LATEX FREE

RADIOLUCENT

SHOULDER WEDGE POSITIONER



WATERPROOF



LATEX FREE



RADIOLUCENT



CODE	Dimensions (cm)
05.00.AP102-3	30 x 22 x 5/1
05.00.AP102-6	50 x 12 x 10/4

LA LI SU

It is designed to **support and protect the patient during supine/lateral surgical procedures**. This cushion reduces pressure ulcers and pressure points, as well as preventing nerve injuries.

PROSTATIC POSITIONER

CODE	Dimensions (cm)
05.00.AP8114J	67.5 x 50 x 11

SU

These special cushions have been designed for **surgeries requiring the supine position**, ensuring proper patient positioning.



WATERPROOF

LATEX FREE

RADIOLUCENT



PIN, HIP AND SACRAL PROTECTION KIT

WATERPROOF

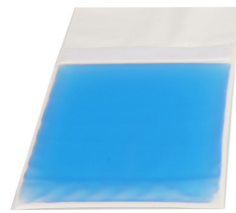
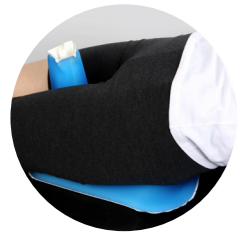
LATEX FREE

RADIOLUCENT

CODE	Dimensions (cm)
05.00.AP055	18 x 18 x 3
05.00.AP056	33 x 30 x 0.8

SU

Composed of two **gel protections**, their main function is to reduce pressure and shear forces in the sacral area. This kit is designed to be used on the fracture table plate.



Wraps around the pin



At the base of the pin

HIP POSITIONER

WATERPROOF

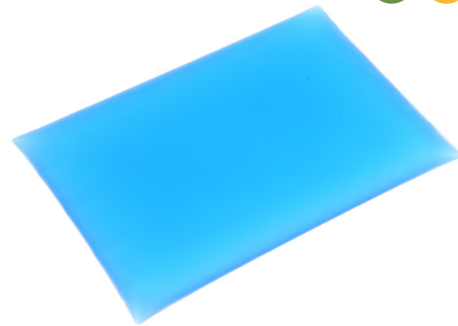
LATEX FREE

RADIOLUCENT

CODE	Dimensions (cm)
05.00.AP054	14 x 20 x 1.3

PR SU

Designed for use with the operating table plate, this product effectively **reduces pressure in the sacral area**.



SHOULDER PIN PROTECTION

WATERPROOF

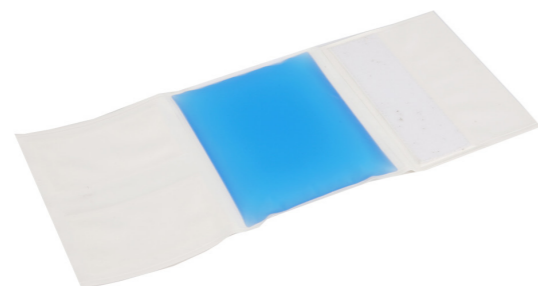
LATEX FREE

RADIOLUCENT

CODE	Dimensions (cm)
05.00.AP556	15 x 13 x 2.5

LI SU PR

Designed to **ensure comfort, prevent patient skin damage, and provide stabilization**.



Wraps around the pin

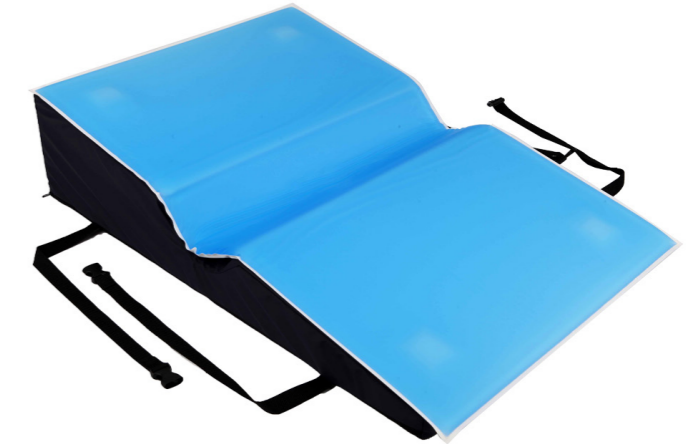
LATERAL POSITIONER

CODE	Dimensions(cm)
05.00.AP101	79 x 50 x 10

LA

Wedge-shaped, with a semicircular groove transversely positioned in the middle section, this positioner allows for **quick and secure placement of the patient's shoulder and arm**. It provides comfort and nerve protection to the patient during surgery. **It significantly relieves tension on the brachial plexus and underlying shoulder, reducing nerve compression.**

The lateral positioner, combined with the ulnar nerve armrest and the horseshoe headrest, **ENSURES PROPER PRESSURE DISTRIBUTION AND MAINTAINS THE PATIENT IN THE CORRECT POSITION** throughout the duration of the surgical procedure.



WATERPROOF

LATEX FREE

RADIOLUCENT

POSITIONING BELT

CODE	Dimensions (cm)
05.00.AP601	292 x 5 (Gel 50.5 x 8.5 x 0.8)
05.00.FC713	143 x 5 (Gel 98 x 8 x 0.8)

LA LI PR SU

This **sturdy black nylon belt**, equipped with a cushion, **ensures patient protection, stability, and safety**. The clip lock is adjustable to fit all operating tables.

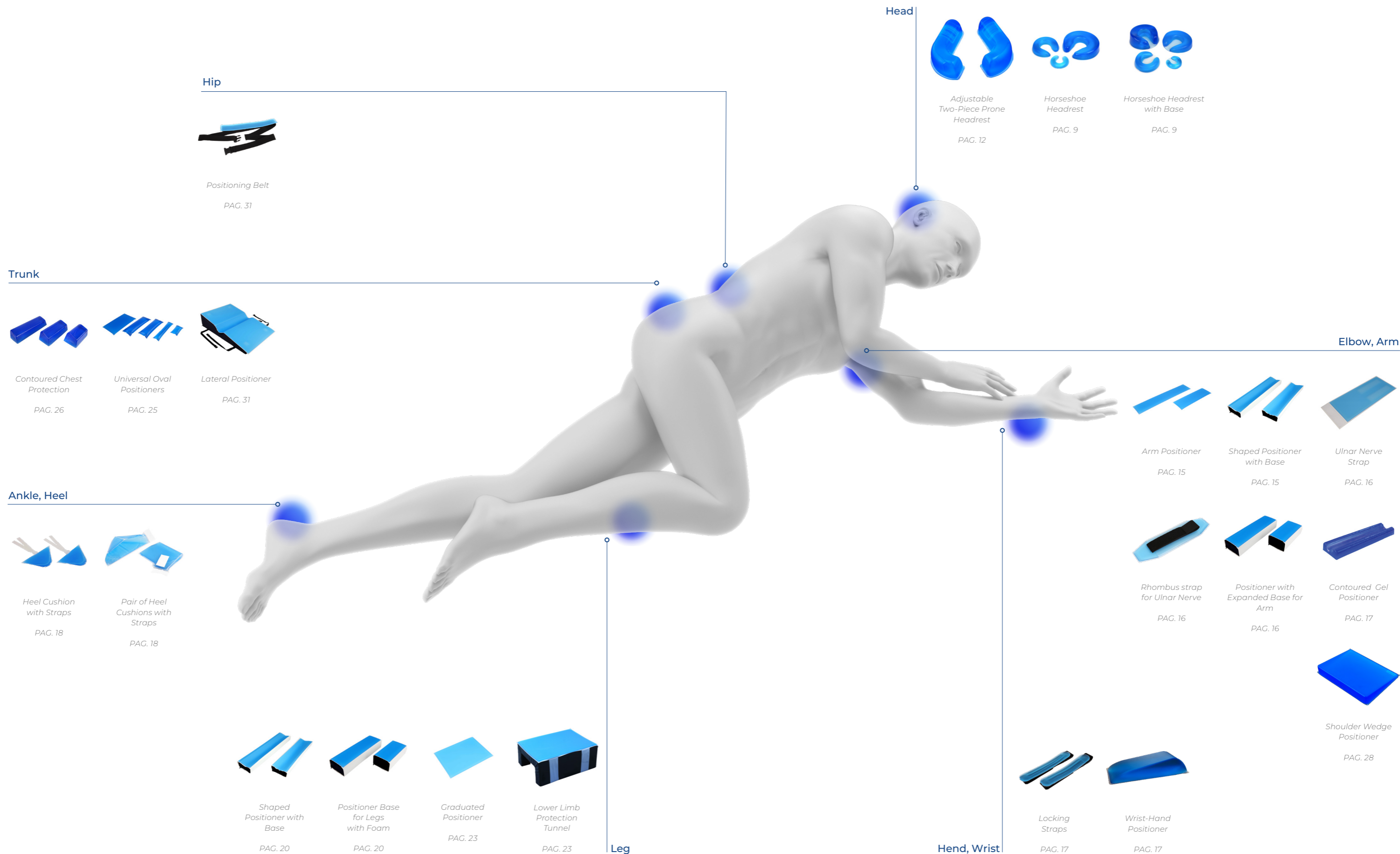
The positioning belt **ENSURES PATIENT SAFETY BY PROVIDING STABILITY ON THE OPERATING TABLE**. Using the clip attachment, the belt can be easily adjusted to fit all operating tables.



WATERPROOF

LATEX FREE

RADIOLUCENT





Chest

- Chest Positioner Set PAG. 27
- Graduated Chest Positioner PAG. 27

Abdomen

- Universal Oval Positioners PAG. 25
- Abdominal Protection - Pediatric PAG. 25

Leg

- Contoured Gel Positioner PAG. 22
- Shaped Positioner with Base PAG. 20
- Positioner Base for Legs with Foam PAG. 20
- Dome Positioner PAG. 20

Ankle, Heel

- Heel Cushion with Straps PAG. 18
- Pair of Heel Cushion with Straps PAG. 18
- Pair of Heel Cups PAG. 18
- Traction Boot Protection PAG. 22
- Heel Support PAG. 19
- Pair of Heart-Shaped Heel Cushions with Recess PAG. 19
- Pair of Heart-Shaped Heel Cushions PAG. 19

Hip

- Pin, Hip and Sacral Protection Kit PAG. 30
- Hip Positioner PAG. 30
- Positioning Belt PAG. 31
- Sacral Protection PAG. 29

Shoulders

- Shoulder Pin Protection PAG. 30
- Shoulder Wedge Positioner PAG. 28

Face

- Bubble Face Rest PAG. 10

Head

- Closed Loop Headrest PAG. 9
- Headrest with Central Recess PAG. 13
- Stabilizing Headrest PAG. 10

Head, Neck

- Contoured Ophthalmic Headrest / Thornton-Style PAG. 12
- Anatomical Supine Headrest PAG. 12
- Heart-shaped Headrest / Ophthalmic PAG. 10
- Thyroid Gland, Head, and Neck Positioner PAG. 13
- Positioning System for Thyroid Gland, Head, and Neck PAG. 13

Back

- Universal Oval Positioners PAG. 25
- Graduated Positioner PAG. 23
- Chest Positioner Set PAG. 27

Elbow, Arm

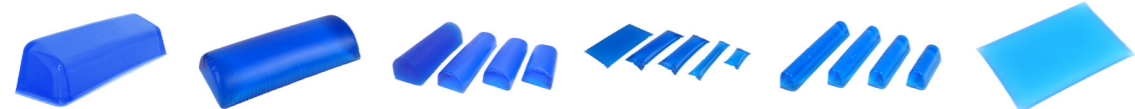
- Contoured Gel Positioner PAG. 17
- Positioner with Expanded Base PAG. 16
- Arm Positioner PAG. 15
- Shaped Positioner with Base for Ulnar Nerve PAG. 15

Hand, Wrist

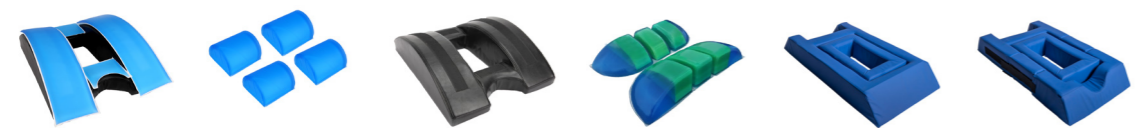
- Locking Straps PAG. 17
- Wrist-Hand Positioner PAG. 17



Abdomen



X-Gel Abdominal Protection PAG. 26
 Dome Positioner PAG. 26
 Abdomen Protection - Adult PAG. 25
 Universal Oval Positioners PAG. 25
 Abdomen Protection - Pediatric PAG. 25
 Hip Positioner PAG. 30



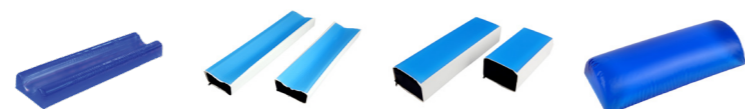
Wilson Frame Pad Set PAG. 24
 Relton Frame Positioner Set PAG. 29
 Wilson Frame PAG. 24
 Prostatic Positioner PAG. 29
 Chest Positioner PAG. 28
 Adjustable Chest Positioner PAG. 28

Ankle

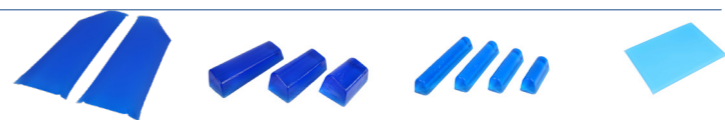


Heel Support
 PAG. 19

Leg



Contoured Gel Positioner PAG. 22
 Shaped Positioner with Base PAG. 20
 Positioner Base for Legs with Foam PAG. 20
 Dome Positioner PAG. 20



Chest Positioner Set PAG. 27
 Contoured Chest Protector PAG. 26
 Abdominal Protector - Pediatric PAG. 25
 Graduated Chest Positioner PAG. 27

Shoulder

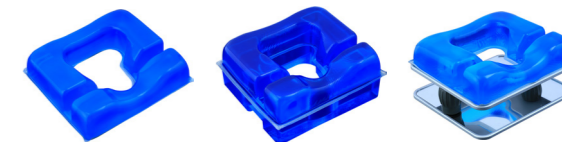


Shoulder Pin Protection
 PAG. 30

Head, Face



Prone Headrest PAG. 14
 Adjustable Two-Piece Prone Headrest PAG. 12
 Two-Way Prone Headrest PAG. 11



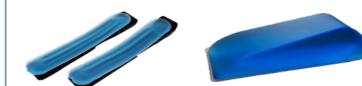
Two-Way Prone Headrest PAG. 11
 Four-Way Prone Headrest PAG. 11
 Prone Headrest with Mirror PAG. 14

Back



Positioning Belt
 PAG. 31

Hand, Wrist

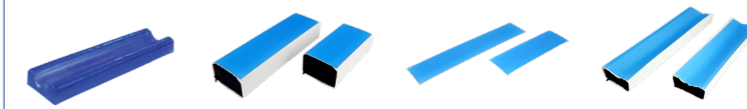


Locking Straps
 PAG. 17



Wrist-Hand Positioner
 PAG. 17

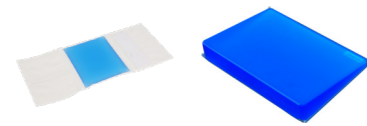
Elbow, Arm



Contoured Gel Positioner PAG. 17
 Foam Base Positioner for Arm PAG. 16
 Arm Positioner PAG. 15
 Shaped Positioner with Base for Ulnar Nerve PAG. 15



Shoulders



Shoulder Pin Protection PAG. 30
Shoulder Widge Positioner PAG. 28

Abdomen



Positioning Belt PAG. 21

Foot

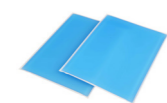


Lithotomy Pin Protection PAG. 21
Ankle Protection Straps PAG. 21



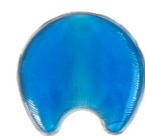
Traction Boot Protection PAG. 22
Allen Support Protections PAG. 22

Leg



Lloyd's Stirrups Cushions PAG. 21

Hip, Sacral



Sacral Protection PAG. 29

Face



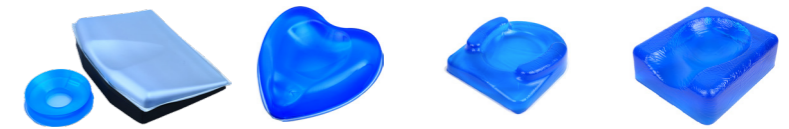
Bubble Face Rest PAG. 10

Head



Closed Loop Headrest PAG. 9
Headrest with Central Recess PAG. 13
Stabilizing Headrest PAG. 10

Head, Neck



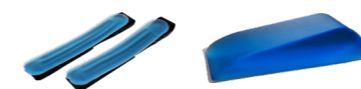
Positioning System for Thyroid Gland, Head, and Neck PAG. 13
Heart-Shaped Headrest / Ophthalmic PAG. 10
Thornton Style Ophthalmic Shaped Headrest PAG. 12
Supine Anatomical Headrest PAG. 12

Back



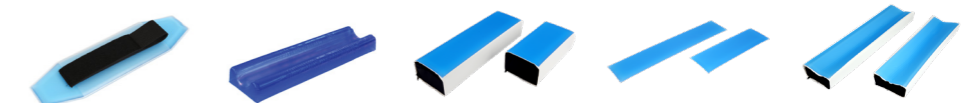
Universal Oval Positioners PAG. 25

Hand, Wrist



Locking Straps PAG. 17
Wrist-Hand Positioner PAG. 17

Elbow, Arm



Rhombus Strap for Ulnar Nerve PAG. 16
Contoured Gel Positioner PAG. 17
Positioner with Expanded Base for Arm PAG. 16
Arm Positioner PAG. 15
Shaped Positioner with Base for Ulnar Nerve PAG. 15

DEMARTA[®] VIRGINIO

MEDICAL AND HEALTH CARE SUPPLIER

Demarta Virginio Srl
Via Europa n.1
13882 Cerrione (BI) ITALY
eMail: info@demarta.com
Tel. +39 015955440

WWW.DEMARTA.COM

